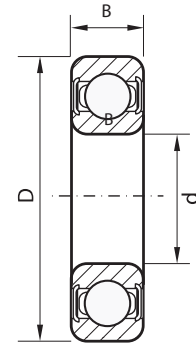


**Baleros / Una Pista / Sin Tapa**

CLAVE	MODELO	DIMENSIONES			V. (MAX) rpm	PESO kg
		d (mm)	D (mm)	B (mm)		
3904	6004	20	42	12	20000	0.067
3920	6200	10	30	9	20000	0.032
3921	6201	12	32	10	20000	0.037
3922	6202	15	35	11	20000	0.041
3923	6203	17	40	12	18000	0.062
3924	6204	20	47	14	15000	0.105
3925	6205	25	52	15	13000	0.122
3926	6206	30	62	16	11000	0.197
3927	6207	35	72	17	9800	0.281
3934	6304	20	52	15	10000	0.144
3937	6307	35	80	21	8800	0.455

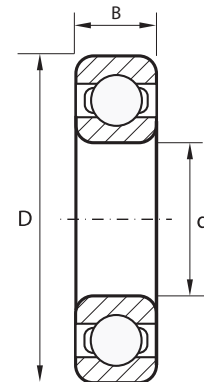
\*V. (Max) son las velocidades máximas permitidas.



**Baleros / Una Pista / Con Tapa**

CLAVE	MODELO	DIMENSIONES			V. (MAX) rpm	PESO kg
		d (mm)	D (mm)	B (mm)		
4020	6200 2RZ	10	30	9	25000	0.032
4021	6201 2RZ	12	32	10	22000	0.037
4022	6202 2RZ	15	35	11	19000	0.045
4023	6203 2RZ	17	40	13	18000	0.066
4024	6204 2RZ	20	47	14	16000	0.106
4025	6205 2RZ	25	52	15	13900	0.128
4026	6206 2RZ	30	62	16	11000	0.199
4027	6207 2RZ	35	72	17	9800	0.288
4028	6208 2RZ	40	80	18	8700	0.366
4029	6209 2RZ	45	85	19	7800	0.398
4030	6300 2RZ	10	35	11	2300	0.053
4031	6301 2RZ	12	37	12	2000	0.06
4032	6302 2RZ	15	42	13	1700	0.082
4033	6303 2RZ	17	47	14	1600	0.115
4034	6304 2RZ	20	52	15	10000	0.144
4035	6305 2RZ	25	62	17	12000	0.232
4036	6306 2RZ	30	72	19	10000	0.360
4037	6307 2RZ	35	80	21	8800	0.457

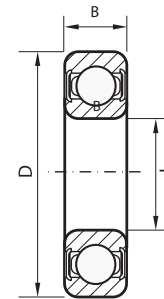
\*V. (Max) son las velocidades máximas permitidas.





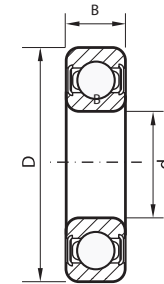
**Baleros / Una Pista / Con Tapa Metalica**

CLAVE	MODELO	DIMENSIONES			V. (MAX) rpm	PESO kg
		d (mm)	D (mm)	B (mm)		
4007	6301 Z	12	37	12	20000	0.06
4008	6302 Z	15	42	13	17000	0.082
4009	6303 Z	17	47	14	16000	0.115



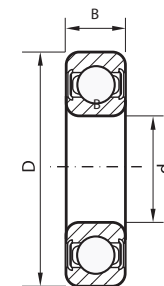
**Baleros / Una Pista / Con Tapa de Plástico**

CLAVE	MODELO	DIMENSIONES			V. (MAX) rpm	PESO kg
		d (mm)	D (mm)	B (mm)		
4002	6002 RZ	15	32	17	20000	0.029



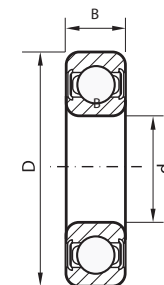
**Baleros / Una Pista / Con Tapa de Plástico**

CLAVE	MODELO	DIMENSIONES			V. (MAX) rpm	PESO kg
		d (mm)	D (mm)	B (mm)		
4005	6004-2RS	20	42	12	13900	0.071
4006	6006-2RS	30	62	16	13000	0.114



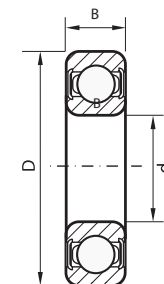
**Baleros / Una Pista / Con Tapa de Plástico**

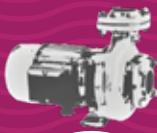
CLAVE	MODELO	DIMENSIONES			V. (MAX) rpm	PESO kg
		d (mm)	D (mm)	B (mm)		
4060	6908 RS	39	62	12	10000	0.175



**Baleros / Una Pista / Con Tapa de Plástico**

CLAVE	MODELO	DIMENSIONES			V. (MAX) rpm	PESO kg
		d (mm)	D (mm)	B (mm)		
4092	62/22 2RS	22	50	14	9700	0.117
4093	63/22 2RS	22	56	16	9200	0.176

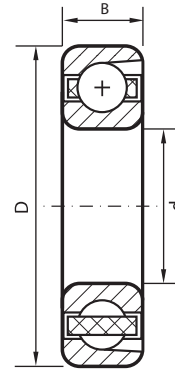




**Baleros / Una Pista / Cónico**

CLAVE	MODELO	DIMENSIONES			V. (MAX) rpm	PESO kg
		d (mm)	D (mm)	B (mm)		
4126	7206 AC	30	62	16	16000	0.193
4136	7306 AC	30	72	19	15000	0.345

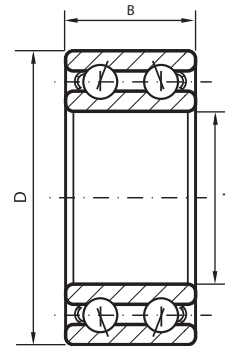
\*V. (Max) son las velocidades máximas permitidas.



**Baleros / Dos Pistas / Cónico**

CLAVE	MODELO	DIMENSIONES			V. (MAX) rpm	PESO kg
		d (mm)	D (mm)	B (mm)		
4226	3206 2RZ	30	62	24	6300	0.303
4228	3208 2RS	40	80	30	6600	0.627
4236	3306 2RZ	30	72	19	5700	0.558

\*V. (Max) son las velocidades máximas permitidas.



**Baleros / Dos Pistas / Cónico**

CLAVE	MODELO	DIMENSIONES			V. (MAX) rpm	APTO PARA MODELO	PESO
		d (mm)	D (mm)	B (mm)			
4003	32208	---	---	---	6300	YAV2105T	0.303





### Flotador de Dos Funciones para Tinaco y Cisterna

CLAVE	MODELO	LONGITUD DEL CABLE	AMPERAJE MÁX.
1304	F2M	2 m	15 A
1305	F3M	3 m	15 A
1306	F6M	6 m	15 A
1307	F10M	10 m	15 A
1350	AS-0.5M	0.5 m	15 A
1351	AS-2M	2 m	15 A
1353	AS-3M	3 m	15 A
1356	AS-6M	6 m	15 A
1358	AS-10M	10 m	15 A
1311	PC-8F	--	15 A

\*Los modelos F0.5M y AS-0.5M no traen contrapeso.



AS-0.5M



F6M



PC-8F



AS-3M,

### Flotador con Clavija

CLAVE	MODELO
1308	FCL-6M



### Contrapeso para Flotador

CLAVE	MODELO
1319	CPSF1



F1SH, F3SH

### Flotador Integrable para Bomba Sumergible

CLAVE	MODELO	MARCA	APTO PARA MODELO DE BOMBA	MEDIDAS
1321	F1SH	SHIMGE	QDX10-12-0.55T, QDX3-24-0.75T, QDX10-16-0.75T	Capuchón 20 mm Barreno 35 mm
1322	FC2SH	SHIMGE	WQDS7-7-0.55, WQDS10-7-0.75, WQDS10-10-1.1, WQDS15-10-1.5, WQD6-12-0.55, WQD6-16-0.75, WQD7-15-1.1	
1323	F1FQ	F&Q	50WQ-2P, 50WQP-4P, QDX6-10-0.55, QDX6-14-0.55, QDX3-18-0.55, QDX3-24-0.75, WQd10-7-0.75QG, WQd10-10-1.1QG, 38WQ0.25-4P WQ7-7-0.55, WQ7-7-0.55, WQ10-10-0.75 WQ15-7-1.1,	
1324	F3SH	SHIMGE	WQD6-12-0.55, WQD6-16-0.75, QDX1.5-17-0.37T, QDX1.5-25-0.55, QDX1.5-32-0.75T	Capuchón 13 mm Barreno 25 mm



FC2SH



F1FQ



### Manguera Plana ORANGE PUMPS (3 kg/cm<sup>2</sup>)

CLAVE	MODELO	DIAMETRO	LARGO (m)
Y1581	YS03-1	1"	50
Y1582	YS03-1.5	1.5"	50
Y1583	YS03-2	2"	50
Y1585	YS03-3	3"	50
Y1592	YX03-1	1"	100
Y1593	YX03-1.5	1.5"	100
Y1594	YX03-2	2"	100
Y1596	YX03-3	3"	100



### Manguera Plana (4 kg/cm<sup>2</sup>)

CLAVE	MODELO	DIAMETRO	LARGO (m)	PESO
1571	M02-1	1"	30	
1572	M02-1.5	1.5"	30	
1573	M02-2	2"	30	9.5 Kg
1575	M02-3	3"	30	13 Kg
1576	M02-4	4"	30	18.5 Kg



### Manguera Plana (4 kg/cm<sup>2</sup>)

CLAVE	MODELO	DIAMETRO	LARGO (m)	PESO
1581	S03-1	1"	50	7 Kg
1582	S03-1.5	1.5"	50	11.5 Kg
1583	S03-2	2"	50	16.5 Kg
1584	S03-2.5	2.5"	50	19.5 Kg
1585	S03-3	3"	50	26 Kg
1586	S03-4	4"	50	37.5 Kg
1587	S03-6	6"	50	50 Kg
1588	S03-8	8"	50	85 Kg
1589	S03-10	10"	50	111 Kg
1592	X03-1	1"	100	14 Kg
1593	X03-1.5	1.5"	100	23 Kg
1594	X03-2	2"	100	33 Kg
1595	X03-2.5	2.5"	100	39 Kg
1596	X03-3	3"	100	52 Kg
1597	X03-4	4"	100	75 Kg





### Manguera Plana Reforzada para la Descarga de Agua (10 kg/cm<sup>2</sup>)

CLAVE	MODELO	MEDIDA	LARGO (m)	PESO
1510	FH10-1.5	1.5"	30	6.5 Kg
1511	FH10-2	2"	30	8.5 Kg
1512	FH10-3	3"	30	10.5 Kg
1513	FH10-4	4"	30	14.5 Kg



### Conexión Rápida para Manguera

CLAVE	MODELO	MEDIDA	MATERIAL
1520	JK-1	1"	ABS
1521	JK-1.5	1.5"	ABS
1522	JK-2	2"	ABS
1523	JK-3	3"	ABS
1524	JK-4	4"	ABS
1525	JK-6	6"	ABS



### Abrazadera

CLAVE	MODELO	MEDIDA	PZS/BOLSA
1532	HG-1	1"	100
1533	HG-1.5	1.5"	20
1534	HG-2	2"	20
1536	HG-3	3"	20
1537	HG-4	4"	20
1538	HG-6	6"	5
1539	HG-8	8"	5



\*Material de construcción: acero



Espiga							
CLAVE	MODELO	MEDIDA EXT.	MEDIDA INT.	RANURAS	LONGITUD	FORMA	MATERIAL
8503	14DS303	Espiga 3/8"	7 mm	4	23 mm	Hexagonal	Bronce
8504	14DS403	Espiga 3/8"	7 mm	3	23 mm	Circular	Bronce
8505	14DS503	Espiga 3/8"	7 mm	4	23 mm	Hexagonal	Bronce



14DS303



14DS503



14DS403

**Espiga**

CLAVE	MODELO	MEDIDA	MATERIAL
9855	BTJ-2F	Espiga 1/2" x NPT 1/2"	Latón

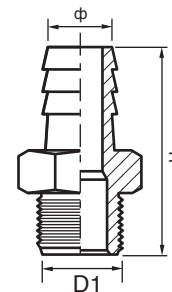


**Espiga (Macho)**

CLAVE	MODELO	MEDIDA (D1)	φ (mm)	H (mm)
8001	BTJ-2	NPT 1/2"	15	49
8002	BTJ-4	NPT 3/4"	19	55
H15	HD-121/30	NPT 1"	14	52
H16	HD-121/31	NPT 1"	16	52
8003	BTJ-6	NPT 1"	25	62
8004	BTJ-8	NPT 1 1/4"	32	63
8005	BTJ-10	NPT 1 1/2"	40	66
8006	BTJ-12	NPT 2"	51	80



BTJ-4



**Conector con Tuerca Unión**

CLAVE	MODELO	MEDIDA	MATERIAL
7302	QC1	G 1" X NPT 1"	Plástico
7303	ZQC	G 1" X NPT 1"	Bronce



Clave: 7302 Modelo: QC1



Clave: 7303 Modelo: ZQC

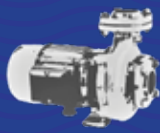
**Espiga**

CLAVE	MODELO	MEDIDA	φ (mm)	H (mm)
9898	DS600H-3/4	UNF 3/4"	14	33



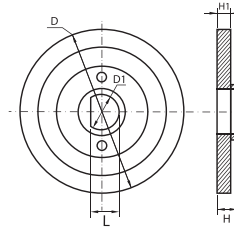
DS600H-3/4





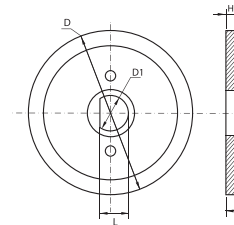
**Impulsor Tipo Turbina**

CLAVE	MODELO	APTO PARA MODELO	D	D1	L	H	H1	MATERIAL
7101	YL101	SH250A	60	12	10	13	5.5	Bronce
7102	YL102	SH450A	71	12	10	13	5.5	Bronce
7103	YL103	SH500A	71	12	10	13	7	Bronce



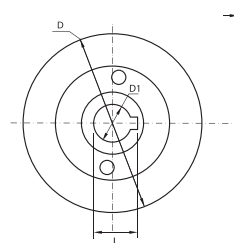
**Impulsor Tipo Turbina**

CLAVE	MODELO	APTO PARA MODELO	D	D1	L	H	H1	MATERIAL
7105	YL105	SA250	60	12	10	14	5.5	Bronce
7106	YL106	SA450	66	12	10	14	5.7	Bronce
7107	YL107	SA500	80	14	12	15	7	Bronce



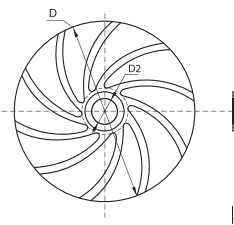
**Impulsor Tipo Turbina**

CLAVE	MODELO	APTO PARA MODELO	D	D1	L	H	H1	MATERIAL
7108	YL-OP200L	OP200L	57	12	14	11	7	Bronce
7109	YL-OA200	OA200	57	12	14	13	8	Bronce
7110	YL-OA400	OA400	57	12	14	13	8	Bronce
7112	YL-OP400L	OP400L	57	12	14	13	8	Bronce

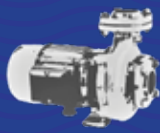


**Impulsor Abierto**

CLAVE	MODELO	APTO PARA MODELO	D1	D2	H1	MATERIAL
7456	YL456	CFG-2023	136	14	26	Fo.Fo.
7457	YL457	CFHG-7023	166	20	48	Fo.Fo.

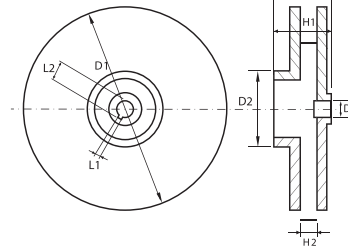






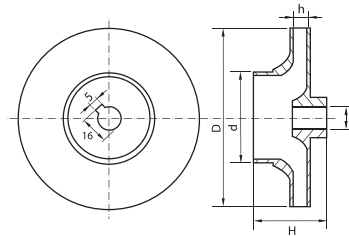
**Impulsor Centrifugo para Bomba Jet**

CLAVE	MODELO	APTO PARA MODELOS	D1	D2	D3	H1	H2	L1	L2	No. Aspas	MATERIAL
7125	YL125	SGJS370N	88	39	10	30	6	4	12	6	Plástico
7126	YL126	SGJS550N, JET370GL1	90	39	10	30	6	4	12	6	Plástico
7127	YL127	SGJS750N, JET550GL1	104	47	12	32.5	4	4	14	6	Plástico
7128	YL128	SGJS1100N, JET750GL1,	104	47	12	32.5	6	4	14	6	Plástico
7129	YL129	SGJS1500N, JET1100GL1,	110	47	14	33.5	6.8	6	16	8	Plástico



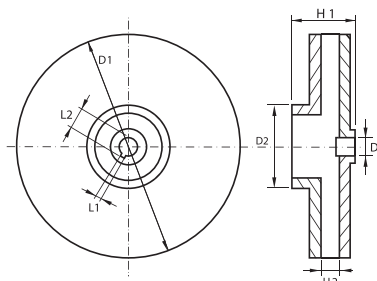
**Impulsor**

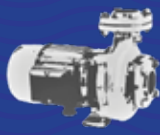
CLAVE	MODELO	APTO PARA MODELO	D	d	H	h	MATERIAL
7226	YL226	50SHM-1.1	108	55	44	9	Bronce
7227	YL227	50SH-1.5	114	55	44	9	Bronce
7228	YL228	75SH-2.2	108	82	45	16	Bronce



**Impulsor para Bomba Centrifuga**

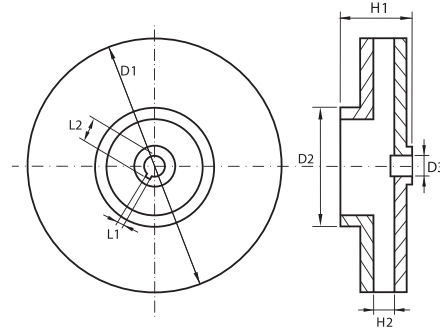
CLAVE	MODELO	APTO PARA MODELOS	D1	D2	D3	H1	H2	L1	L2	No. Aspas	MATERIAL
7141	YL141	SGJW37	96	32.5	10	29	3.6	3.5	6.5	6	Bronce
7142	YL142	SGJW55	104	46.5	12	30	5	3.5	13.5	6	Bronce
7143	YL143	SGJW75	108	46.5	12	30	5	3.5	13.5	6	Bronce
7144	YL144	SGJW110	112	47	12	30	6	3.5	13.5	6	Bronce
7151	YL151	SH250	106	39	10	28	1.6	3.5	13.5	6	Bronce
7152	YL152	SH450	122	39	12	30	2	3.5	13.5	6	Bronce
7153	YL153	SH500	128	40	12	28	2	3.5	13.5	6	Bronce
7162	YL162	CP170, CPM170	135	40.6	12	25	2	3.5	13.5	6	Bronce
7163	YL163	CP190	155	41.6	12	31	2	3.5	13.5	6	Bronce
7164	YL164	CP200	167	41.6	14	35	2	4.5	16	6	Bronce





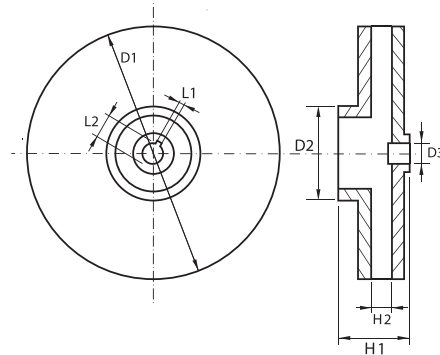
**Impulsor para Bomba Centrífuga**

CLAVE	MODELO	APTO PARA MODELO	D1	D2	D3	H1	H2	L1	L2	No. Aspas	MATERIAL
7136	YL136	QDX10-12-0.55T	105	49.5	12	32	5.5	4	14	6	Aluminio
7137	YL137	QDX10-16-0.75T	110	49.5	12	32	5.5	4	16	6	Aluminio



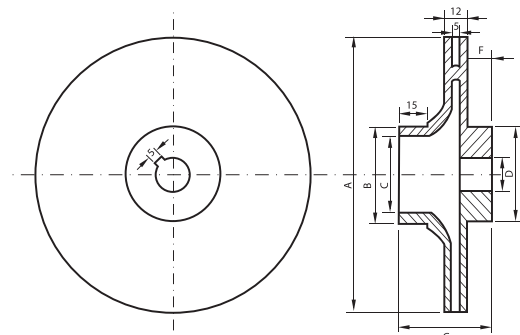
**Impulsor para Bomba Centrífuga**

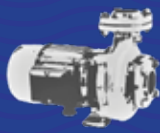
CLAVE	MODELO	APTO PARA MODELOS	D1	D2	D3	H1	H2	L1	L2	No. Aspas	MATERIAL
7131	YL131	QDX1.5-17-0.37T	104	35.5	12	29	2	3.5	13.5	6	Plástico
7132	YL132	QDX1.5-25-0.55T, QDX3-24-0.75T	118	35.5	12	30	2.7	3.5	13.5	6	Plástico
7133	YL133	QDX1.5-32-0.75T	142	34	12	29	2	3.5	13.5	6	Plástico



**Impulsor Cerrado**

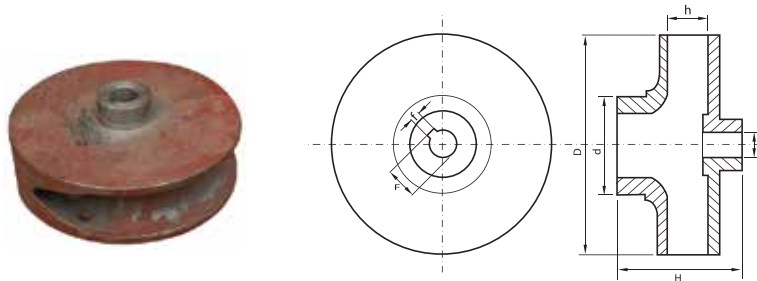
CLAVE	MODELO	APTO PARA MODELO	ØA	ØB	ØC	ØD	ØE	F	G	MATERIAL
7281	YL281	QX6-25-1.1	128	45	33	13	45	4.3	42.5	Fo.Fo.
7282	YL282	QX10-34-2.2	147	51.5	40	18	49.5	13	50	Fo.Fo.





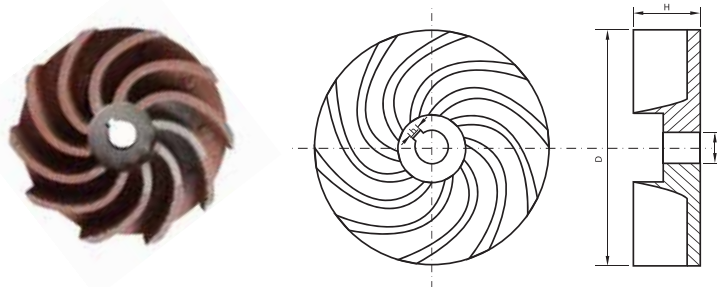
**Impulsor**

CLAVE	MODELO	APTO PARA MODELO	D	d	a	H	h	F	f	MATERIAL
7271	YL271	WQD6-12-0.55	98	45	12	57	21	13.5	4	Fo. Fo.
7272	YL272	WQD6-16-0.75	101	45	12	57	17	13.5	4	Fo. Fo.
7273	YL273	WQD7-15-1.1	118	55	15	65	23	17	5	Fo. Fo.



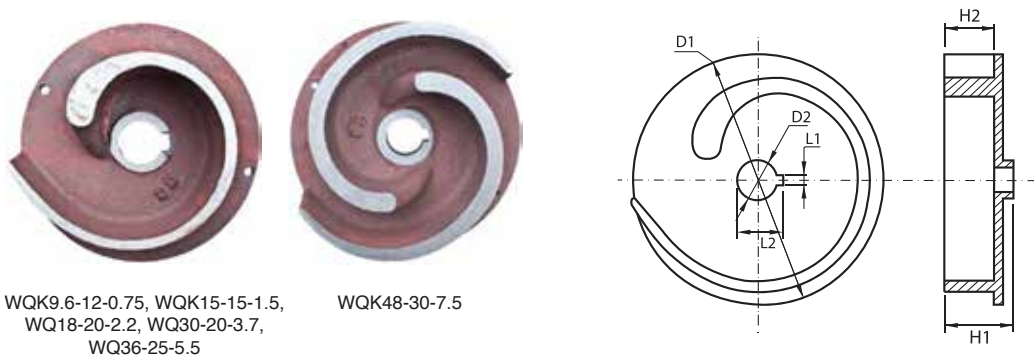
**Impulsor Abierto**

CLAVE	MODELO	APTO PARA MODELOS	d (mm)	D (mm)	H (mm)	MATERIAL
7285	YL285	WVSD55F	12	86	27	Fo.Fo.
7286	YL286	WVSD75F	12	93	27	Fo.Fo.
7287	YL287	WVS110, WVSD110	15	101	28	Fo.Fo.



**Impulsor Abierto**

CLAVE	MODELO	APTO PARA MODELO	D1	D2	L1	L2	H1	H2	ASPAS	MATERIAL
7291	YL291	WQK9.6-12-0.75	98	17.5	5.5	21	48	30	mono	Fo.Fo.
7292	YL292	WQK15-15-1.5	107	17.5	5.5	21	61	44	mono	Fo.Fo.
7293	YL293	WQK18-20-2.2	118	17.5	5.5	21	67.5	44	mono	Fo.Fo.
7294	YL294	WQK30-20-3.7	128	24.5	7.5	28	64.5	45	mono	Fo.Fo.
7295	YL295	WQK36-25-5.5	137	24.5	7.5	28	70	52	mono	Fo.Fo.
7296	YL296	WQK48-30-7.5	152	24.5	7.5	28	70	50	dos	Fo.Fo.



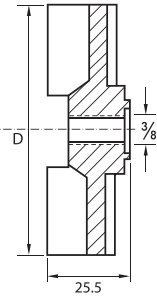
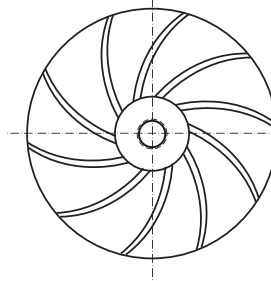
WQK9.6-12-0.75, WQK15-15-1.5,  
WQK18-20-2.2, WQK30-20-3.7,  
WQK36-25-5.5

WQK48-30-7.5



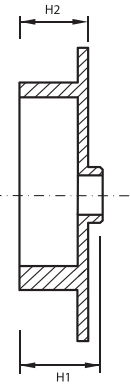
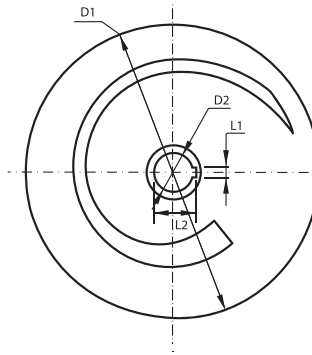
**Impulsor Abierto**

CLAVE	MODELO	APTO PARA MODELOS	D	MATERIAL
7451	YL451	CFQ33, CFQ50	77	Fo.Fo.
7452	YL452	CFQ75	78	Fo.Fo.



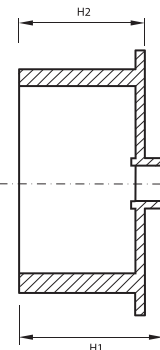
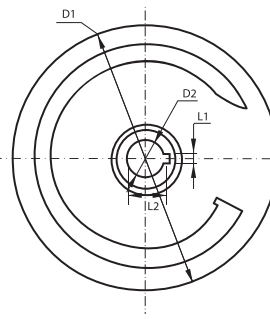
**Impulsor Abierto**

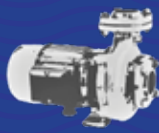
CLAVE	MODELO	APTO PARA MODELO	D1	D2	L1	L2	H1	H2	MATERIAL
7453	YL453	WQd10-10-1.1QG	130	16	5	18	50	41	Fo.Fo.
7454	YL454	WQd10-7-0.75QG	110	14	5	17	46	36.5	Fo.Fo.



**Impulsor Abierto**

CLAVE	MODELO	APTO PARA MODELO	D1	D2	L1	L2	H1	H2	ASPAS	MATERIAL
7455	YL455	USC-2HP	123	17	6	20	84	71	mono	Fo.Fo.





**Impulsor Tipo Vortex**

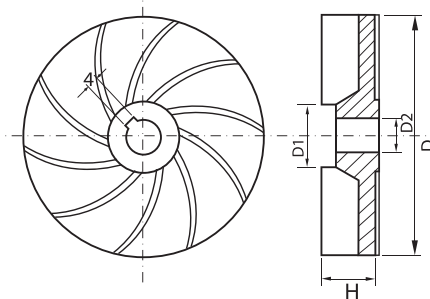
CLAVE	MODELO	APTO PARA MODELO	D	D1	D2	H	MATERIAL
7172	YL172	50WQ0.37-2P	87	22	11.5	21	Fo.Fo.
7173	YL173	50WQ0.55-2P	93	22	11.5	21	Fo.Fo.
7174	YL174	50WQ0.75-2P	103	22	11.5	21.5	Fo.Fo.
7175	YL175	50WQ1.1-2P	112	23.5	11.5	23.5	Fo.Fo.



YL172, YL173, YL174



YL175

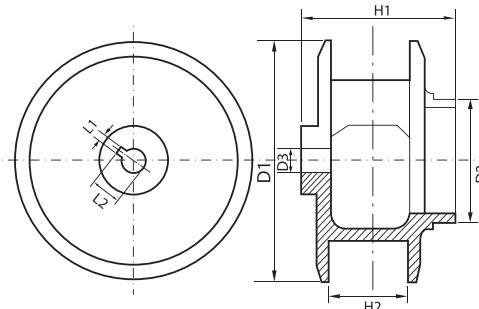


**Impulsor Cerrado**

CLAVE	MODELO	APTO PARA MODELO	D1	D2	D3	H1	H2	L1	L2	MATERIAL
7177	YL177	50WQP0.37-4P	130	38	13.5	86.5	45	5	16.5	Fo.Fo.
7178	YL178	50WQP0.55-4P	135	38	13.5	86.5	45	5	16.5	Fo.Fo.
7179	YL179	50WQP0.75-4P	140	38	13.5	86.5	45	5	16.5	Fo.Fo.

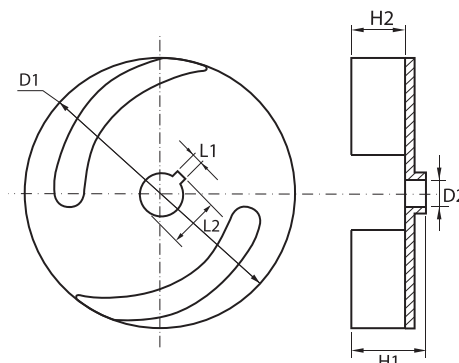


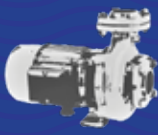
50WQP0.37-4P, 50WQP0.55-4P, 50WQP0.75-4P



**Impulsor Abierto**

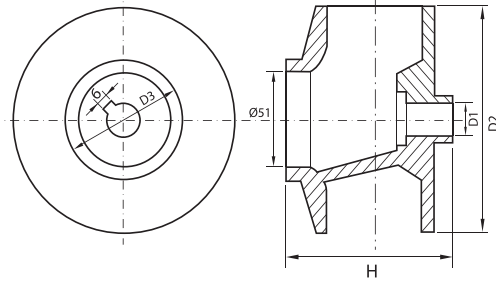
CLAVE	MODELO	APTO PARA MODELO	D1	D2	H1	H2	L1	L2	MATERIAL
7181	YL181	80WQ0.75-4P	140	15	66	50	4.5	18	Fo.Fo.
7182	YL182	80WQ1.1-4P	150	15	66	50	4.5	18	Fo.Fo.
7183	YL183	80WQ1.5-4P	155	15	66	50	4.5	18	Fo.Fo.





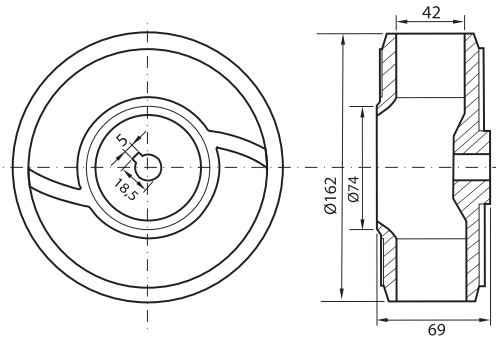
**Impulsor Cerrado**

CLAVE	MODELO	APTO PARA MODELOS	D1	D2	D3	H	MATERIAL
7192	YL192	80WQ20-21, 80WQ20-23	18	110	64	90	Fo.Fo.
7193	YL193	80WQ30-23	18	120	64	90	Fo.Fo.



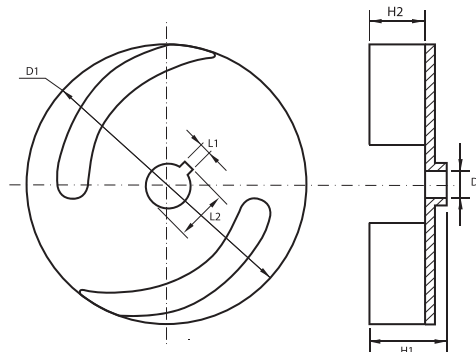
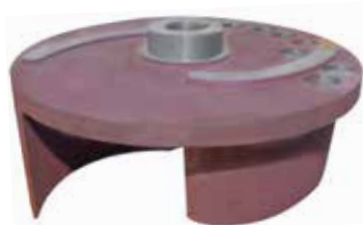
**Impulsor Cerrado**

CLAVE	MODELO	APTO PARA MODELO	D1	D2	D3	H1	H2	L1	L2	MATERIAL
7184	YL184	80WQ2.2-4P	162	75	15	69	41	4.5	18	Fo.Fo.
7187	YL187	100WQP2.2-4P	165	116	24	121	62	7.5	28	Fo.Fo.
7188	YL188	100WQP3.7-4P	175	116	24	121	62	7.5	28	Fo.Fo.

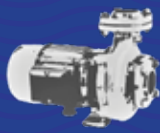


**Impulsor Abierto**

CLAVE	MODELO	APTO PARA MODELO	D1	D2	H1	MATERIAL
7197	YL197	100CFS11MX	203	25	106.5	Fo.Fo.
7198	YL198	100CFS15MX	215	25	106.5	Fo.Fo.

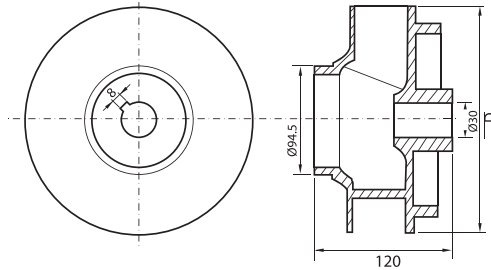






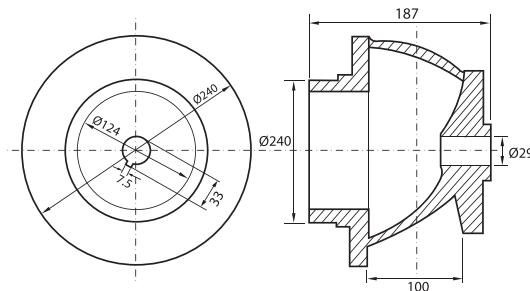
**Impulsor Cerrado**

CLAVE	MODELO	APTO PARA MODELO	D	MATERIAL
7411	YL411	80WQ45-15-5.5	198	Fo.Fo.
7412	YL412	100WQ100-10-5.5	190	Fo.Fo.
7413	YL413	100WQ100-14-7.5	215	Fo.Fo.



**Impulsor Cerrado**

CLAVE	MODELO	APTO PARA MODELO	MATERIAL
7414	YL414	150WQ145-10-7.5	Fo.Fo.

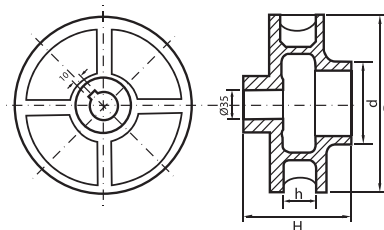


**Impulsor Cerrado**

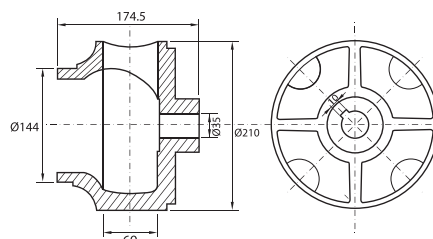
CLAVE	MODELO	APTO PARA MODELO	D	H	h	d	MATERIAL
7416	YL416	80WQ45-32-11	252	136	43	104	Fo.Fo.
7417	YL417	80WQ70-22-11	226	136	43	104	Fo.Fo.
7418	YL418	100WQ100-22-15	232	160	58	144	Fo.Fo.
7415	YL415	150WQ100-28-18.5	250	190	65	144	Fo. Fo.



YL416, YL417, YL418



YL415







**Impulsor Cerrado**

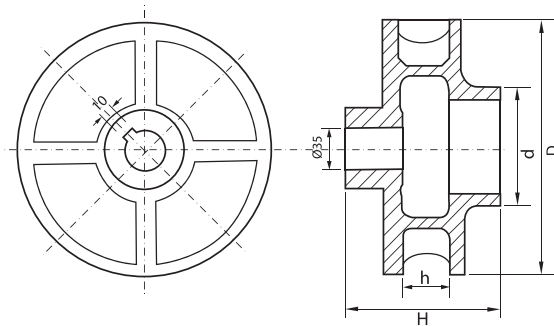
CLAVE	MODELO	APTO PARA MODELO	D	H	h	d	MATERIAL
7422	YL422	150WQ200-12-15, 150WQ130-15-11					Fo.Fo.
7425	YL425	200WQ300-12-18.5	245	225	87	80	Fo. Fo.



YL422

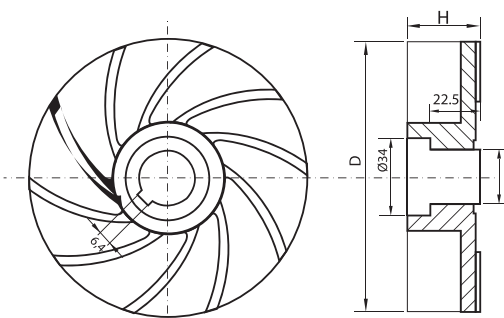


YL425



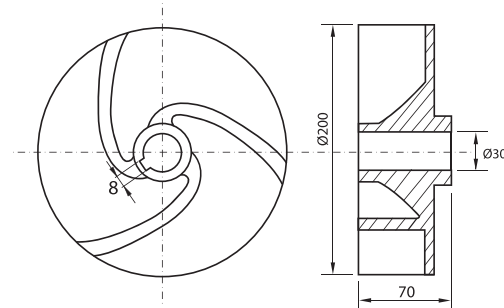
**Impulsor Abierto**

CLAVE	MODELO	APTO PARA MODELO	D (mm)	H (mm)	MATERIAL
7431	YL431	4CFR-33	114	29	Fo.Fo.
7432	YL432	4CFR-53	116	31	Fo.Fo.
7433	YL433	4CFR-73	134	40	Fo.Fo.



**Impulsor Abierto**

CLAVE	MODELO	APTO PARA MODELO	MATERIAL
7409	YL409	WQ70-15-7.5QG	Fo.Fo.





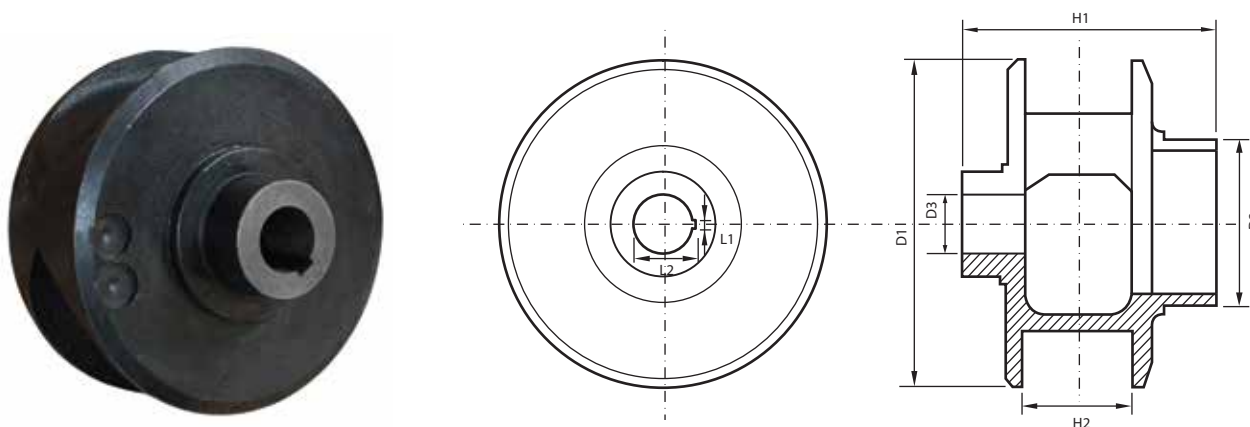
**Juego de Cortador**

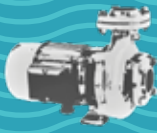
CLAVE	MODELO	APTO PARA MODELO	MATERIAL
7480	JUEGO DE CORTADOR	WQ70-15-7.5QG	FIERRO



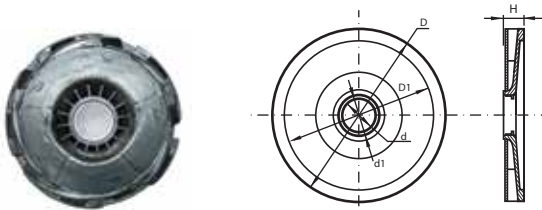
**Impulsor Cerrado**

CLAVE	MODELO	APTO PARA MODELO	D1	D2	D3	H1	H2	L1	L2	MATERIAL
7424	YL424	200WQ250-17-22	250	80	45	220	82	13.4	50	Fo.Fo.

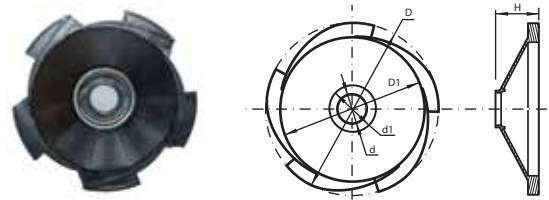




CLAVE	MODELO	MARCA	d	d1	D	D1	H	APTO PARA MODELOS
1901	DFS-1	SHIMGE	29	33	141	121	24	SGJW37
1902	DFS-2	SHIMGE	25	47	165	130	41	SGJW55, SGJW75, SGJW110
1905	DFS-5	SHIMGE	27	40	137	109	38	JET370, JET550
1907	DFS-7	SHIMGE	40	48	149	125	40	JET750
1909	DFS-9	SHIMGE	40	48	158	137	41	JET1100, JET1500



DFS-1



DFS-2

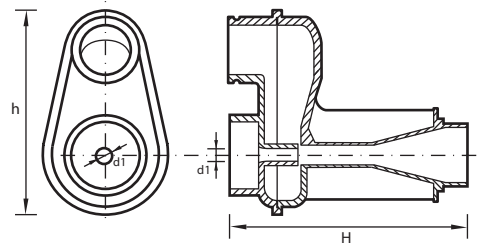


DFS-5, DFS-7, DFS-9

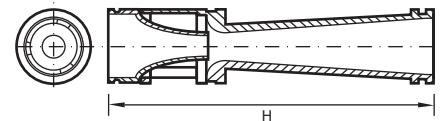
CLAVE	MODELO	MARCA	d1	H	h	APTO PARA LOS MODELOS
1911	SLQ-1	SHIMGE	8	110	92	SGJW37
1912	SLQ-2	SHIMGE	-	123	-	SGJW55, SGJW75, SGJW110
1915	SLQ-5	SHIMGE	9	57	79	JET370
1916	SLQ-6	SHIMGE	9	102	80	JET550
1917	SLQ-7	SHIMGE	9	104	87	JET750
1918	SLQ-8	SHIMGE	9	103	88	JET1100
1919	SLQ-9	SHIMGE	10	128	97	JET1500



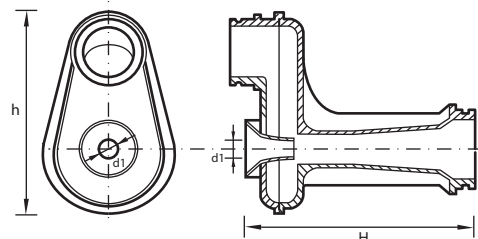
SLQ-1



SLQ-2



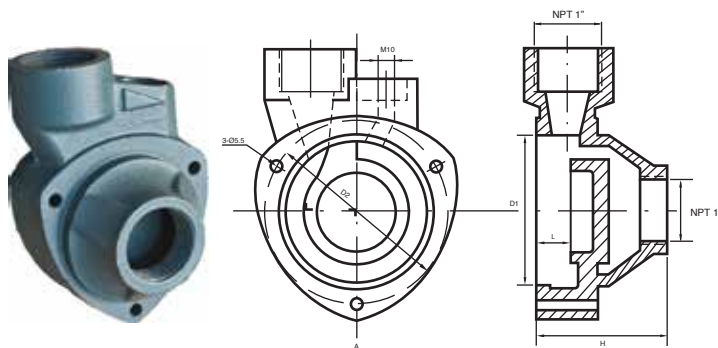
SLQ-5, SLQ-6, SLQ-7,  
SLQ-8, SLQ-9



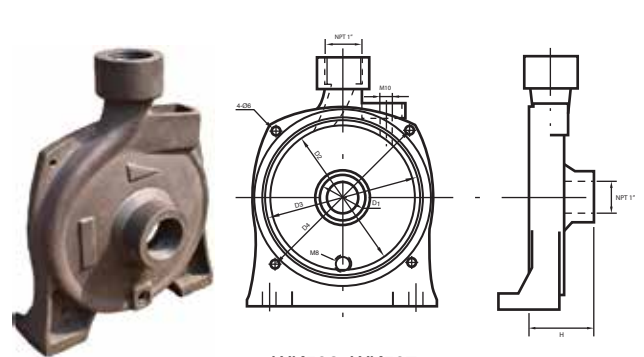


**Voluta para Bomba Línea Doméstica**

CLAVE	MODELO	APTO PARA MODELO	D1	D2	L	D3	D4	H
3501	WK501	SH250A	59.5	77	17	--	--	59
3502	WK502	SH450A	70.5	91	17.5	--	--	65
3503	WK503	SH500A	70.5	89	19	--	--	67
8599	WKOP400L	OP400L	--	--	--	--	--	--
8600	WKOP200L	OP200L	--	--	--	--	--	--
3506	WK506	SH250	40	132	--	141.5	170	60
3507	WK507	SH450, SH500	43	--	--	147	180.5	66



WK501, WK502, WK503, WKOP400L, WKOP200L



WK506, WK507

**Base para Sello**

CLAVE	MODELO	APTO PARA MODELO
6461	BSCFG5023	CFG-5023
6462	BSCFHG7023	CFGH-7023



**Voluta**

CLAVE	MODELO	APTO PARA MODELO
3634	WK-JET370	JET370
3635	WK-JET550	JET550
3636	WK-JET750 - JET1100	JET750, JET1100
3637	WK-JET1500	JET1500



**Adaptador de Balero y Voluta**

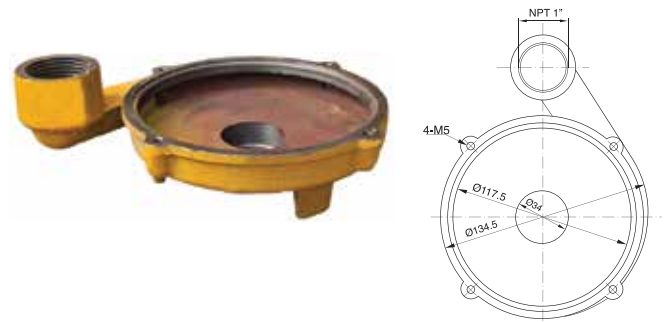
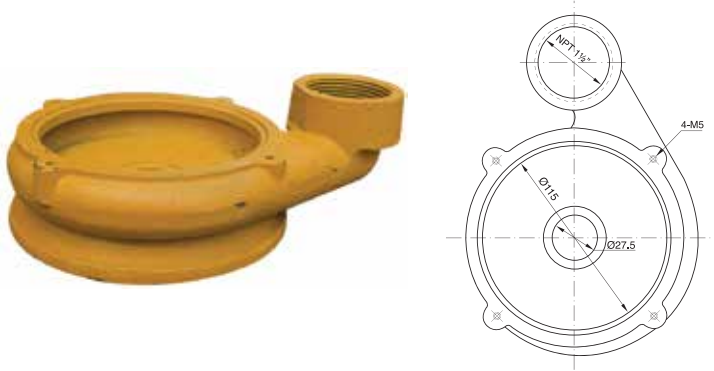
CLAVE	MODELO	APTO PARA MODELO
3504	WK504	SA250





CLAVE	MODELO	APTO PARA MODELOS
3524	WK524	QDX10-12-0.55T, QDX10-16-0.75T

CLAVE	MODELO	APTO PARA MODELO
3521	WK521	QDX1.5-17-0.37T



CLAVE	MODELO	APTO PARA MODELO	D1	D2
3522	WK522	QDX1.5-25-0.55T, QDX3-24-0.75T	125.4	156
3523	WK523	QDX1.5-32-0.75T	145	162



CLAVE	MODELO	APTO PARA MODELO	D1	D2	D3
1960	WK-GDQ 1.5-17	GDQ1.5-17-0.37TF	117.5	130	28
1961	WK-GDQ 1.5-22	GDQ1.5-22-0.37TF	130	140	24
1962	WK-GDQ 1.5-32	GDQ1.5-32-0.75TF	155	168	30

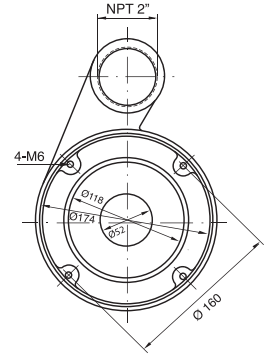






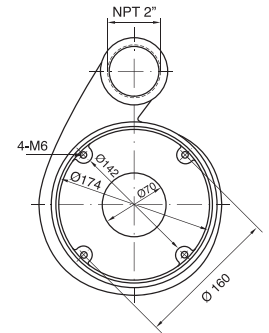
## Voluta

CLAVE	MODELO	APTO PARA MODELO
3621	WK621	50WQ0.37-2P, 50WQ0.55-2P, 50WQ0.75-2P, 50WQ1.1-2P, 50WQ0.37-2PF, 50WQ0.55-2PF, 50WQ0.75-2PF, 50WQ0.55-2P3V, 50WQ0.75-2P3V



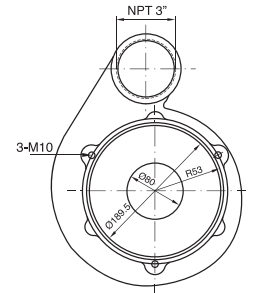
## Voluta

CLAVE	MODELO	APTO PARA MODELO
3623	WK623	50WQP0.37-4P, 50WQP0.55-4P, 50WQP0.75-4P, 50WQP0.37-4PF, 50WQP0.55-4PF, 50WQP0.75-4PF



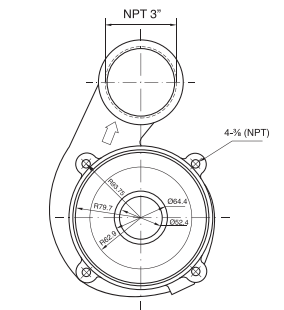
## Voluta

CLAVE	MODELO	APTO PARA MODELO
3625	WK625	80WQ0.75-4P, 80WQ1.1-4P, 80WQ1.5-4P, 80WQ2.2-4P



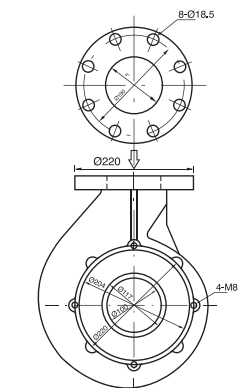
## Voluta

CLAVE	MODELO	APTO PARA MODELO
3627	WK627	80WQ20-21, 80WQ20-23, 80WQ30-23



## Voluta

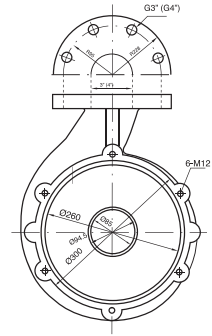
CLAVE	MODELO	APTO PARA MODELO
3629	WK629	100WQP2.2-4P, 100WQP3.7-4P





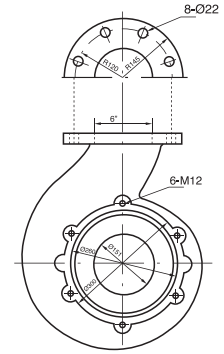
**Voluta**

CLAVE	MODELO	APTO PARA MODELO
3630	WK630	80WQ45-15-5.5 (3")
3631	WK631	100WQ100-14-7.5 (4"), 100WQ100-10-5.5 (4")



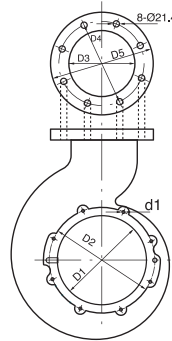
**Voluta**

CLAVE	MODELO	APTO PARA MODELO
3633	WK633	150WQ145-10-7.5



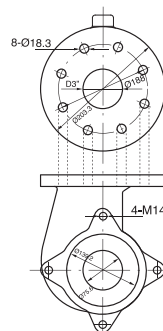
**Voluta**

CLAVE	MODELO	D1	D2	d1	D3	D4	D5	APTO PARA MODELO
3641	WK641	300	355	M10	6"	203.	208	150WQ130-15-11, 150WQ200-12-15
3642	WK642	300	360	M12	8"	308	350	200WQ250-17-22, 200WQ300-12-18.5
3643	WK643							150WQ200-12-15



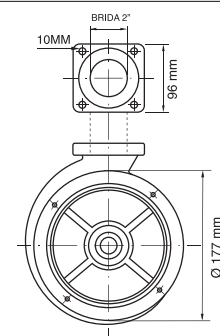
**Voluta**

CLAVE	MODELO	APTO PARA MODELO
3651	WK651	4CFR-33, 4CFR-53, 4CFR-73



**Voluta**

CLAVE	MODELO	APTO PARA MODELO
3652	WK652	WQd10-10-1.1QG





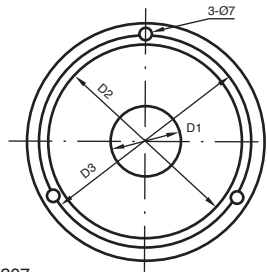


**Base para Bomba**

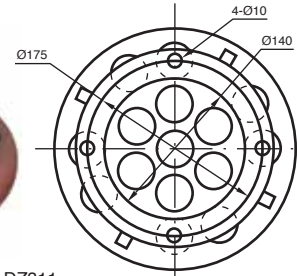
CLAVE	MODELO	APTO PARA MODELOS	D1 (mm)	D2 (mm)	D3 (mm)
5201	DZ201	WQD6-16-0.75, WQD6-12-0.55			
5206	DZ206	WVSD55F, WVSD75F	φ40	φ110	φ122.5
5207	DZ207	WVSD110, WVS110	φ52	φ125	φ138.5
5211	DZ211	WQK9.6-12-0.75, WQK15-15-1.5, WQK18-70-2.2	φ60	φ129.5	φ144
5212	DZ212	WQK30-20-3.7	φ70	φ159.5	φ180
5212A	DZ212A	WQK36-25-5.5, WQK48-30-7.5			
5214	DZ214	WQDS7-7-0.55, WQDS10-7-0.75			
5311	DZ311	100WQP2.2-4P, 100WQP3.7-4P			
5312	DZ314	WQD10-10-1.1QG	130	280	82
5322	DZ322	80WQ45-15-5.5, 100WQ100-10-5.5, 100WQ100-14-7.5, 150WQ145-10-7.5, 80WQ45-32-11, 80WQ70-22-11, 150WQ130-15-11, 100WQ100-22-15, 150WQ200-12-15			
3530	DZ-GDW6-16-0.75	GDW6-16-0.75			



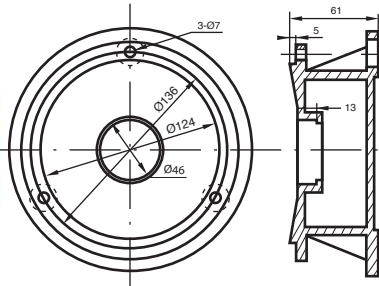
DZ206, DZ207



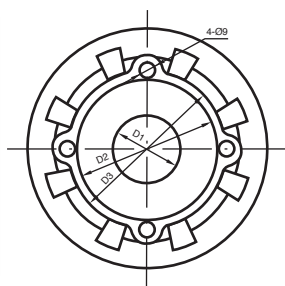
DZ311



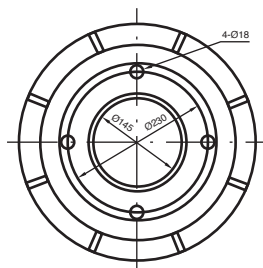
DZ201



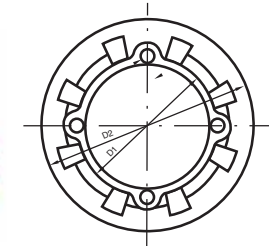
DZ211, DZ212



DZ322



DZ314



DZ214



DZ-GDW6-16-0.75



**Cable para Bomba Monofásica (3 hilos, con clavija)**

CLAVE	MODELO	LARGO	MEDIDA Hilos x mm <sup>2</sup>	CALIBRE AWG/hilos	APTO PARA MODELOS DE BOMBA	MEDIDA Capuchón
0601	CBL01	1 m	3x1	17/3	SH60T, SH70T, SH80T, SH250, SH450, SH500 SGJW55, SGJW75, SGJW110, CPm170 25JET-55, 25JET-75	
0602	CBL02	6 m	3x0.75	18/3	120BS, 180BS, 250BS, QDX5-7-0.25, QDX3-9-0.37,	A1: 20 mm L1: 25 mm B: 6 mm

**Cable para Bomba Monofásica (3 hilos, con clavija y terminal vulcanizada)**

CLAVE	MODELO	LARGO	MEDIDA Hilos x mm <sup>2</sup>	APTO PARA MODELOS DE BOMBA	MEDIDA Capuchón
0603	CBL03	8 m	3x0.75	QDX1.5-17-0.37T	A1: 14 mm L2: 21 mm B: 4.5 mm
0603B	CBL03B	8 m	3x1	QDX1.5-25-0.55T, QDX10-12-0.55T, WQD6-12-0.55	A1: 21 mm L2: 30 mm B: 6 mm
0603C	CBL03C	8 m	3x1.5	QDX1.5-32-0.75T, QDX3-24-0.75T, WQD6-16-0.75	A1: 21 mm L2: 30 mm B: 6 mm
0604	CBL04	8 m	3x1.5	WQD7-15-1.1, WQd10-7-0.75QG, WQd10-10-1.1QG	A: 18.5 mm L: 20.5 mm
0605	CBL05	5 m	3x1.5	WVSD110AF (127V ~ 60Hz), WVSD11 (220V ~ 60Hz). WVSD150F (220V ~ 60Hz)	A1: 21 mm L1: 30 mm B: 6 mm
0607	CBL07	5 m	3x1	WQDS7-7-0.55	A1: 14 mm L1: 21 mm B: 4.5 mm
0607B	CBL07B	5 m	3x1.5	WVSD55F, WVSD75F	A1: 21 mm L1: 30 mm B: 6 mm
0611	CBL11	6.3 m	3x2	CFV33, CFV50, CFV75, CFQ33, CFQ50 CFQ75, CFS411, CFS511, 38WQ0.25-4P, 50WQ0.37-2P, 50WQ0.55-2P, 50WQ0.75-2P, 50WQP0.37-4P, 50WQP0.55-4P, 50WQP0.75-4P, QDX6-10-0.55, QDX6-14-0.55, QDX3-18-0.55, QDX3-24-0.75, WQ7-7-0.55, WQ10-10-0.75, WQ15-7-1.1	A: 19 mm L: 29 mm C: 16 mm
0660	CBL-WQY370	4 m	3x	WQY370	A: 18 mm L: 35 mm C: 14 mm
0661	CBL-WQY550	4 m	3x	WQY550	A: 18 mm L: 35 mm C: 14 mm



CBL02



CBL11



### Cable para Bomba Monofásica (3 hilos, sin clavija y con terminal vulcanizada)

CLAVE	MODELO	LARGO	MEDIDA Hilos x mm <sup>2</sup>	CALIBRE AWG/hilos	APTO PARA MODELOS DE BOMBA	MEDIDA Capuchón
0606	CBL06	10 m	3x2.5	13/3	WQDS15-10-1.5 (120V 1~)	A1: 20 mm L1: 24 mm B: 6 mm
0612	CBL12	10 m	3x2	14/3	80WQ0.75-4P, 80WQ1.1-4P, 80WQ1.5-4P (220V 2~)	A: 17 mm L: 27 mm C: 19 mm

### Cable para Bomba Trifásica (4 hilos, sin clavija)

CLAVE	MODELO	LARGO	MEDIDA Hilos x mm <sup>2</sup>	CALIBRE AWG	TERMINAL VULCANIZADA	APTO PARA MODELOS DE BOMBA	MEDIDA Capuchón
0631	CBL31	6 m	4x1.5	15	SI	WQK9.6-12-0.75, WQK15-15-1.5, WQK18-20-2.2	A1: 21 mm L1: 24 mm B: 7 mm
0632	CBL32	6 m	4X4	11	SI	WQK30-20-3.7, WQK36-25-5.5	A1: 21 mm L1: 24 mm B: 7 mm
0633	CBL33	6 m	3X6 + 1X4	8	SI	WQK48-30-7.5	A1: 30 mm L1: 36 mm B: 9 mm
0641	CBL41	10 m	4x1.5	15	SI	80WQ0.75-4P, 80WQ1.1-4P, 80WQ1.5-4P, 80WQ2.2-4P	A: 17 mm L: 26 mm C: 19 mm
0642	CBL42	10 m	4x1.5	15	SI	USC-2HP	A1: 19 mm L1: 21 mm B: 5 mm
0643	CBL43	10 m	4x2	14	SI	100WQ1.5-4P, 100WQ2.2-4P, 100WQ3.7-4P	A: 15 mm L: 42 mm
0644	CBL44	10 m	3x4 + 1x2.5	11	SI	80WQ45-15-5.5, 100WQ100-10-5.5, 100WQ100-14-7.5, 150WQ145-10-7.5, WQ70-15-7.5QG, WQ20-40-7.5, QX10-64/2-4, QX10-96/3-7.5	A: 24 mm L: 48 mm
0645	CBL45	10 m	3x16 + 1x6	5	SI	80WQ45-32-11, 80WQ70-22-11, 150WQ130-15-11, 100WQ100-22-15, 150WQ200-12-15	A: 32 mm L: 44 mm
0646	CBL46	10 m	3x25 + 1x10	3	SI	150WQ100-28-18.5, 200WQ300-12-18.5, 100WQ150-22-22, 150WQ150-22-22, 200WQ250-17-22, 250WQ600-12-37, 150WQ150-36-30, 200WQ360-16-30, 200WQ250-25-37,	A: 37 mm L: 52 mm
0647	CBL47	10 m	3x35 + 1x 10	2	SI	200WQ250-25-37, 250WQ600-20-55	A: 39 mm L: 47 mm
0649	CBL49	10 m	3x50 + 1x16	1/0	SI	250WQ600-25-75	A: 50 mm L: 47 mm
0651	CBL51	10 m	4x5.261	10	NO	4CFR-33, 4CFR-53, 4CFR-73, CFG-5023, CFHG-7023	

#### DIMENSIONES CAPUCHÓN

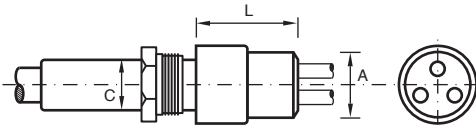


Figura 1

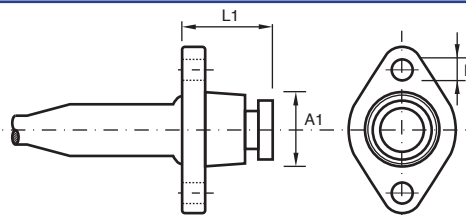


Figura 2



### Cable Sensor

CLAVE	MODELO	LARGO	MEDIDA (mm <sup>2</sup> )	TERMINAL VULCANIZADA	APTO PARA MODELOS DE BOMBA
0650	CBLS50	10 m	8x1	SI	250WQ600-25-75





### Cable para Bomba Sumergible Línea 80WQ

CLAVE	MODELO	LARGO	MEDIDA Hilos x mm <sup>2</sup>	CALIBRE AWG	TERMINAL VULCANIZADA	APTO PARA MODELOS DE BOMBA	MEDIDA Capuchón
0612A	CBL12A	10 m	3x2	14/3	SI	80WQ0.75-4P, 80WQ1.1-4P, 80WQ1.5-4P	A: 17 mm L: 27 mm B: 19 mm
0641A	CBL41A	10 m	4x1.5	15	SI	80WQ0.75-4P, 80WQ1.1-4P, 80WQ1.5-4P, 80WQ2.2-4P	A: 17 mm L: 26 mm B: 19 mm

Estos modelos ya están preparados con la resina.



CBL12A

Estos modelos incluye clavija.



CBL41A

### Cable para Bomba

CLAVE	MODELO	APTO PARA MODELO
0613	CBL13	DEW08V, DEW15V
0614	CBL14	DEW22V, DEW37V

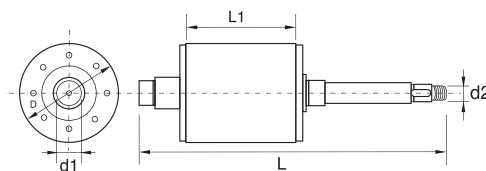


### Rotor para Bomba Sumergible Vortex

CLAVE	MODELO	APTO PARA MODELO	L	L1	D	d1	d2
3013	RT3013	50WQ0.75-2P	206	62.7	64	17	10
3014	RT3014	80WQ1.1-4P	225	77	80	24	12



50WQ0.75-2P



### Rotor para Bomba Sumergible Línea Americana

CLAVE	MODELO	APTO PARA MODELO	L	L1	D	d1	d2
3051	RT3051	80WQ20-21	266	76	68	17	18
3052	RT3052	80WQ20-23	266	70	68	17	17
3053	RT3053	80WQ30-23	266	90.8	69	17	18



80WQ30-23

